

4x2

VOLUNTEER™ UTILITY VEHICLE

FEATURES

624cc V-TWIN
ENGINE WITH 2-YEAR
WARRANTY*

32.8 FT.-LBS. OF
TORQUE @ 2,200 RPM

3" LADDER-STYLE
STEEL FRAME

1,400-LB. TOWING AND
PAYLOAD CAPACITY**

14.4 CUBIC FOOT
STEEL BED

ADJUSTABLE
COIL-OVER SHOCKS

DUAL A-ARM,
FULLY INDEPENDENT
SUSPENSION

4-WHEEL, 8" HYDRAULIC
DISC BRAKES

TOP SPEED OF 30 MPH

1-YEAR LIMITED
WARRANTY*

*See specifications for warranty information.
**Includes operator, passenger and bed capacity



UTILITY MEETS VERSATILITY.

The Volunteer 4x2 was built to handle more, more efficiently, so you can get more done. It's built tough from the ground up, starting with a powerful 624cc V-Twin engine, a tough ladder-style steel frame and a 1,400-lb. payload and towing capacity. And with dual A-arm, independent suspension and adjustable coil-over shocks, no matter where you're headed, you'll be traveling in comfort. Smart thinking, only from Cub Cadet.

INNOVATIVE FEATURES FOR AN INCREDIBLE EXPERIENCE. THAT'S THE CUB CADET ADVANTAGE.



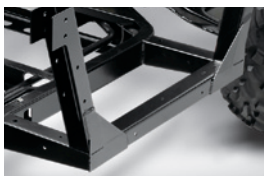
UNRIVALED VERSATILITY

Designed to do it all, and, with more than 40 available attachments, the tasks and adventures are nearly unlimited.



HAUL THE HEAVIEST LOADS

With its 1,400-lb. payload capacity**, the Volunteer can take it — with ease and confidence.



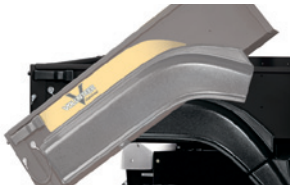
SMOOTH RIDE

Its adjustable coil-over suspension is strong enough for the heaviest loads while delivering a smooth ride — even over challenging terrain.

LOCATE A DEALER AT
CUBCADET.COM

INNOVATIONS NO ONE ELSE CAN DELIVER. AN EXPERIENCE NO ONE ELSE CAN MATCH. PROVE IT TO YOURSELF WITH A TEST DRIVE.

OPTIONAL EQUIPMENT FOR ALL VOLUNTEER™ UTILITY VEHICLES



ELECTRIC BED LIFT (A212)
Push-button operation makes it easier and more convenient to get jobs done. Mounting hardware included. Electric accessory harness (B209) required.



HORN (B101)
Lightweight, 113db-rated horn mounts to the frame of the Volunteer™ in four simple steps. Electric accessory harness (B209) required.



SIGNAL LIGHTS (A239)
Bright and visible for turns, brakes, work and hazard.



TURF TIRES AND BLACK STEEL RIMS, SET OF 4 (A70010)
Set of four 12" black steel rims and turf tires. Turf tires are designed to be gentle on grass and turf.



BENCH SEAT (A70003)
Comfortably fits two people for maximum efficiency.



HEAVY-DUTY BED LINER (A70001)
Heavy-duty molded bed and tailgate liner protects the bed from scratches and wear. Bed mat also available. (A208)



POLY CANOPY (A70004)
Light and sturdy roof for protection from the elements.



SPEEDOMETER & FUEL GAUGE (B70012)
Digital speedometer, fuel gauge, trip function and odometer.



REVERSE BACK-UP ALARM (A234)
Reverse back-up alarm enhances awareness with an intermittent beep when the shifter is placed in reverse.

ENGINE

Engine	18 HP* Kohler® Command® V-Twin
Displacement	624cc
Fuel	Gas
Torque	32.8 ft.-lbs. at 2,200 rpm
Ignition	Transistor controlled
Lubrication	Full pressure w/spin-on oil filter
Engine Cooling	Air
Air Cleaner	Dual element, replaceable

SUSPENSION

Shocks	Adjustable coil-over
Travel	8"

FRAME

Frame	3" ladder construction
Receiver	2" - class 1
Bumper	Steel

TRANSMISSION

Drive	Enclosed CVT
Rear Differential	Mechanical differential
Speed	0 - 30 mph
Transaxle	Fully enclosed, oil bath
Selector	Hurst® shifter (F-N-R)
Rear Axle Housing	Cast-iron

ELECTRICAL SYSTEM

Battery	450 cold crank amp.
Alternator	12V - 15 amp.
Headlights	Halogen 37.5 watts
Wiring	Automotive fused
Power Port	12V in-dash

CONTROLS

Brakes	4-wheel, 8" hydraulic disc
Brake Lines	Stainless steel braided
Parking Brake	Mechanical
Steering	Rack and pinion
Indicators	Fuel, battery, oil, parking brake and hour meter

CAPACITY

Towing/Payload	1,400 lbs. (total payload includes operator, passenger and bed capacity)
Fuel Tank	7 gal.
Cargo Box	Steel (1,000 lbs.) L/W/H: 51.6"/42"/11.5"
Storage	Glove box, under-seat

SEATS

Seats	Professional high-back
-------	------------------------

TIRES

Tires	Dual purpose
Front Tire Size	25" x 9" - 12"
Rear Tire Size	25" x 10" - 12"
Rims	12" steel

DIMENSIONS

Length/Width/Height	119"/63.55"/73"
Tread Center	F: 52"/R: 50"
Wheelbase	78"
Ground Clearance	11" (under foot platform)
Turning Circle (diameter)	22'

WARRANTY*

	1-year limited residential
--	----------------------------

*as rated by engine manufacturer

Cub Cadet Utility Vehicles are intended for off-road use by adults only. They are neither designed nor equipped to be registered as motor vehicles for use on public roadways. Always use extreme caution when operating utility vehicles, and carefully follow all operating, maintenance and safety instructions and warnings. Please see the operator's manual and the warning labels posted on the vehicle itself for more details.

This brochure is for advertisement purposes only. The product depictions are not meant to be used or relied upon as a substitute for the safety and use information that is published in the respective operator's manual. Before operating the machine, read, understand and follow all instructions in the manual and on the machine. Specifications and programs are subject to change without notice. Images may not reflect dealer inventory and/or unit specifications.

†See your local Cub Cadet Independent Dealer for warranty details. Additional attachments are available. Please ask your dealer or visit www.cubcadet.com for more information.

773-04473 Printed in U.S.A. 12/11

© 2012 Cub Cadet